



# Integration of Sites Reservoir Operations with the Kern Fan Groundwater Storage Project

Paul Weghorst  
*Irvine Ranch Water District*

February 21, 2020



# Presentation Agenda

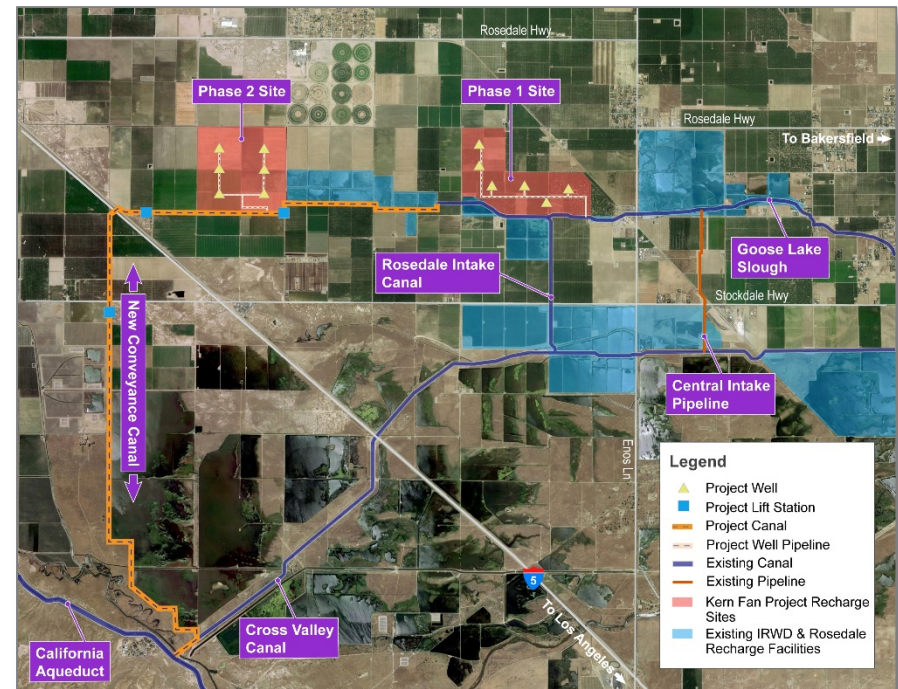
- Overview of Kern Fan Groundwater Storage Project
- Sites integration concept
- Generating additional environmental benefits by exchange
- Example of integration operations
- Impacts on Sites carryover storage
- Discussion

# Kern Fan Groundwater Storage Project

## Banking Components and Facilities:

- ✓ Aquifer  
(100,000 AF of storage)
- ✓ Land: 1,050 acres for recharge  
(100,000 AFY)
- ✓ Water Supply  
(Unallocated Article 21 water)
- ✓ Recovery: Up to 12 wells  
(70 cfs, 50,000 AFY)
- ✓ Conveyance: New 10 mile canal with 3 lift stations  
(Turnout from California Aqueduct)

Preliminary Locations

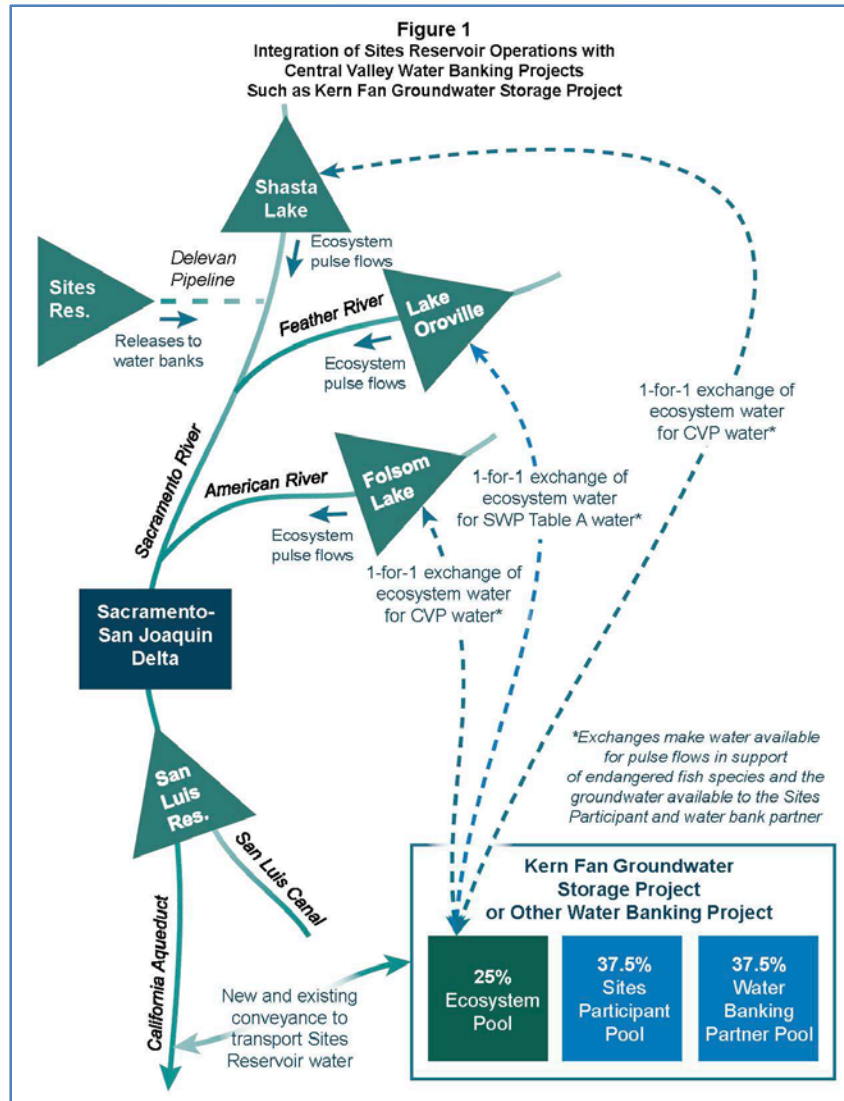


To be implemented in partnership with  
Rosedale-Rio Bravo Water Storage District using \$68 million in funds from Prop 1.

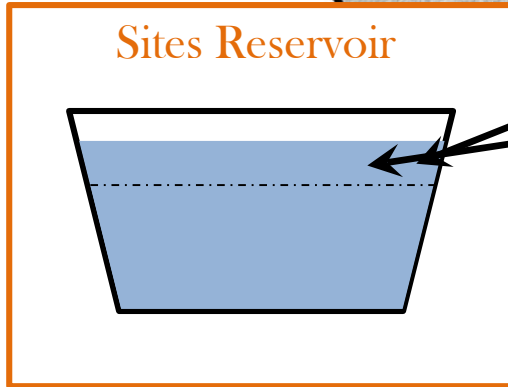
# Integration Concept

- When storage in Sites Reservoir is full
  - Move water into the Kern Fan Project subject to available capacity in:
    - Delevan Pipeline
    - Delta export pumps
    - California Aqueduct
    - Kern Fan Project
- Generate environmental pulse flows from the State and Federal Projects through exchanges
- Use remaining banked water to benefit of Sites participants and the water banking partners
- Refill Site Reservoir
- Resume normal Sites operations

# Generating Pulse Flows by Exchange



# Operations Example Prepared by MBK Engineers



Look for periods when Sites is relatively full...

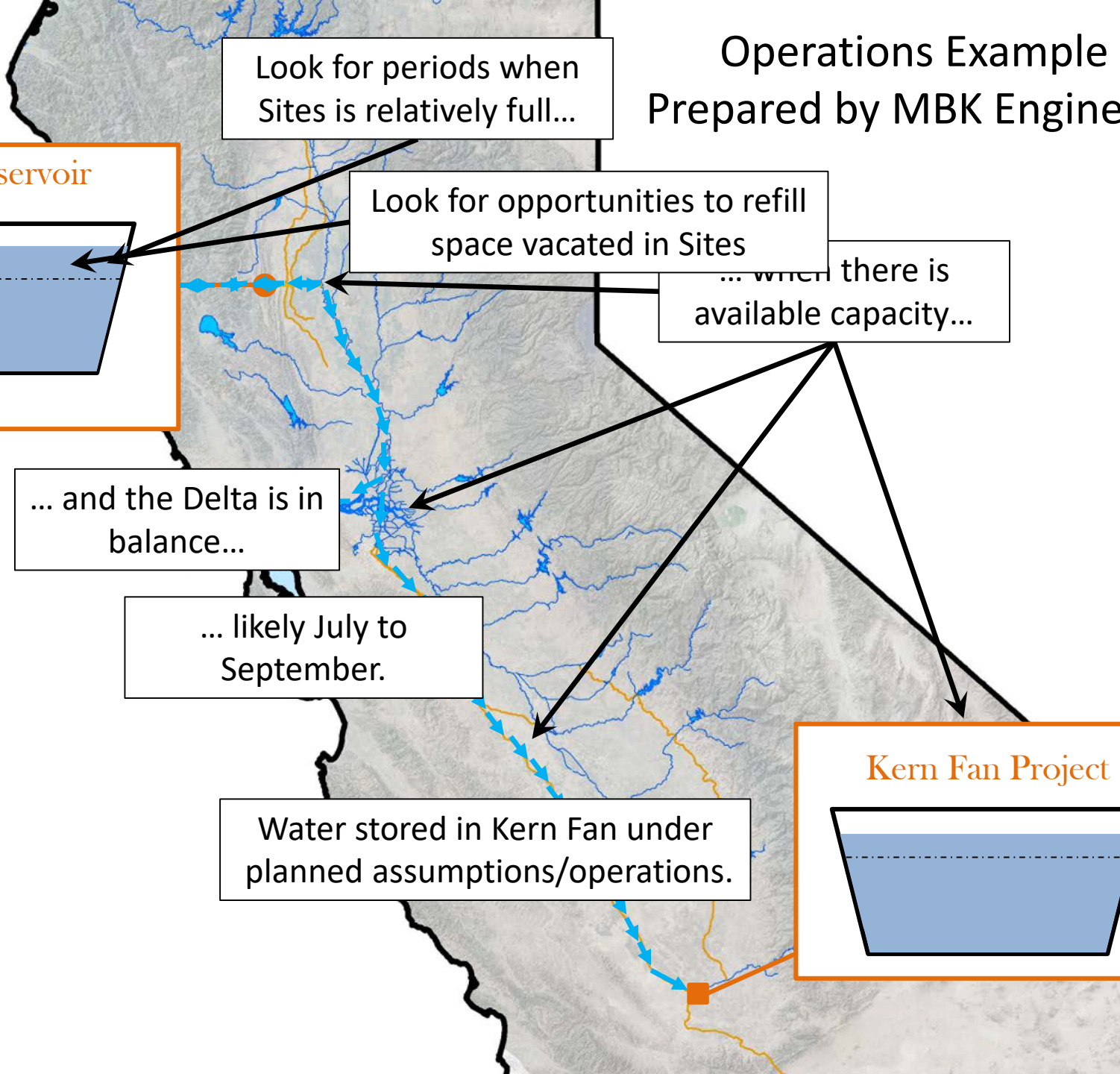
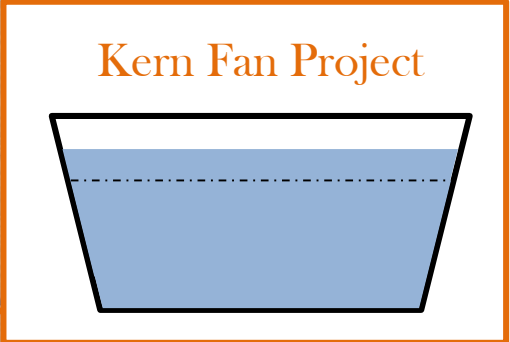
Look for opportunities to refill space vacated in Sites

... when there is available capacity...

... and the Delta is in balance...

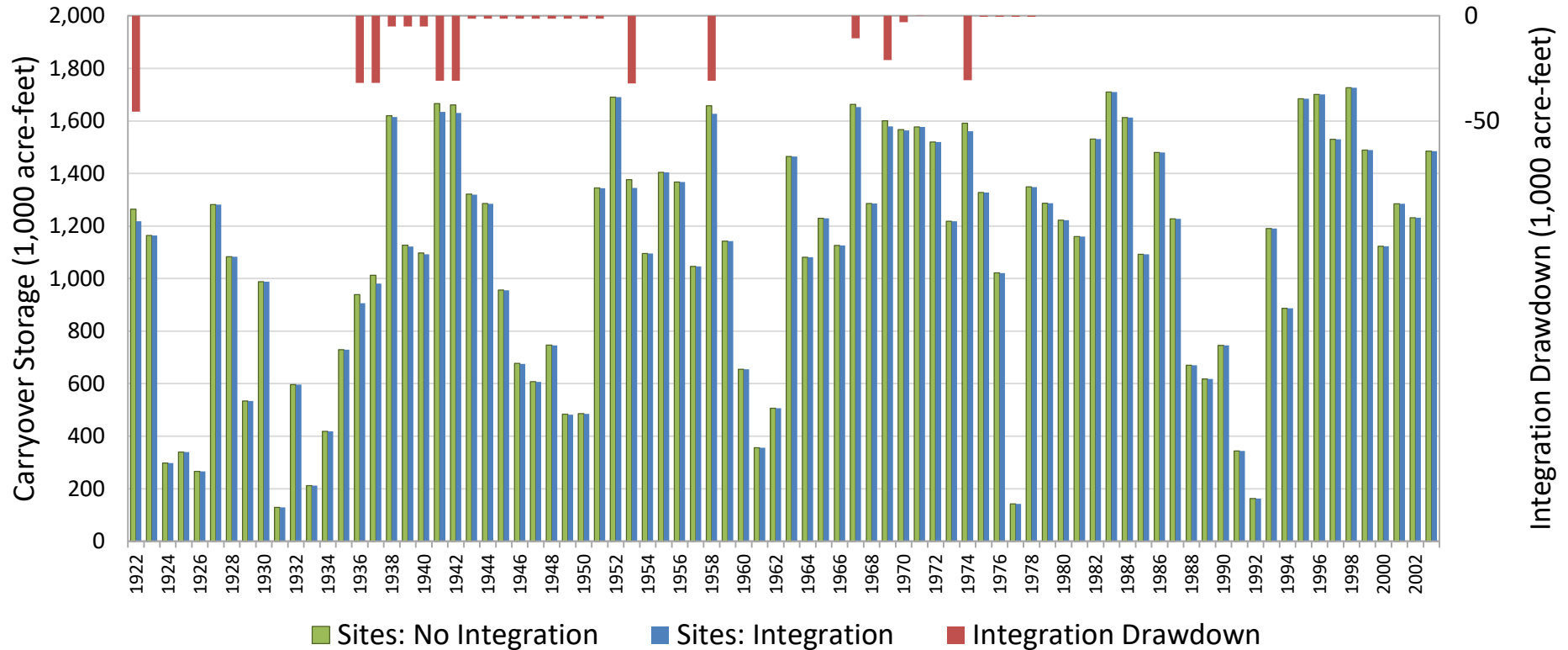
... likely July to September.

Water stored in Kern Fan under planned assumptions/operations.



# Sites Carryover with Integration

Prepared by MBK Engineers



Integration would have low risk to carryover in Sites Reservoir

# Contact Information

Paul Weghorst  
Executive Director of Water Policy  
Irvine Ranch Water District  
Office: (949) 453-5632  
[weghorst@irwd.com](mailto:weghorst@irwd.com)

Eric Averett  
General Manager  
Rosedale-Rio Bravo Water Storage District  
Office: (661) 589-6045  
[eaverett@rrbwsd.com](mailto:eaverett@rrbwsd.com)

