

Appendix 24A

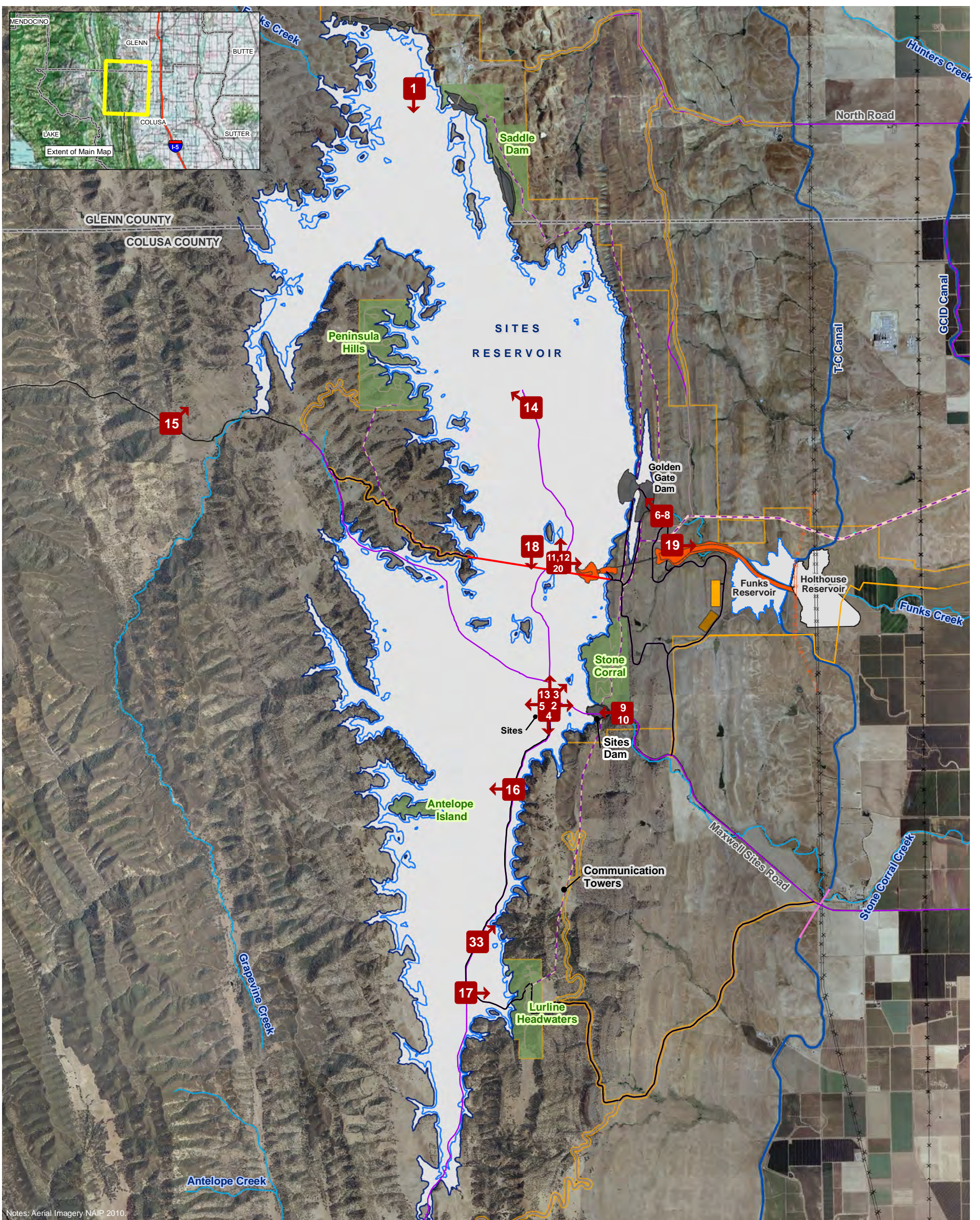
Landscape Character Photos and Associated Maps

Appendix 24A Introduction

Much of the information contained in this appendix was originally produced in the 2017 Public Draft Environmental Impact Report/Environmental Impact Statement (2017 Draft EIR/EIS). Multiple project facilities evaluated in the 2017 Draft EIR/EIS are no longer part of the Project as described in this Revised Draft Environmental Impact Report/Supplemental Draft Environmental Impact Statement. Therefore, photos of the following areas are excluded in this appendix: Delevan Pipeline, Delevan Intake, Holthouse Reservoir, transmission lines associated with Holthouse Reservoir and the Delevan Pipeline, Lurline Headwaters Recreation Area, and Antelope Island Recreation Area. The areas and features that are included in this appendix are representative of the Project components described in Chapter 2, *Project Description and Alternatives*. The figure numbering in Section 24A.1 of this appendix reflects the original numbering in the 2017 Draft EIR/EIS. However, new photos have been included to show the areas that would be affected by the Dunnigan Pipeline alignment. The new photos were taken on February 5–6, 2021, from the intersection of Road 8 and Road 89A, Road 90B near its intersection with Road 8, Richie Bros. Auction Yard, and Road 99W, and on February 10, 2021, for views from State Route 45. Therefore, the photos and figure numbering in Section 24A.2 of this appendix are independent of the 2017 Draft EIR/EIS.

Section 24A.1

**2017 Draft EIR/EIS
Photos and Maps**



Notes: Aerial Imagery NAIP 2010.

Path: C:\Users\Ugolmani\ArcGIS\NODOS\Photos\PhotoPoints\Fig30-1A_SitesResPhotoMap.mxd

Legend

- Photo # & Location w/ Aspect
- 1.27-MAF Reservoir
- 1.81-MAF Reservoir
- Dams
- Existing Funks Reservoir
- Holthouse Reservoir Complex
- Recreation Areas
- Inlet/Outlet Structure
- Asphalt Plant
- Field Office Maintenance Yard
- Construction Disturbance Area
- Transmission Line Easement
- Sites/Delevan Overhead Power Line
- Existing Transmission Line
- Delevan Pipeline
- TRR Pipeline
- Existing Access Roads
- Proposed Project Roads**
- Gravel
- Paved
- South Bridge

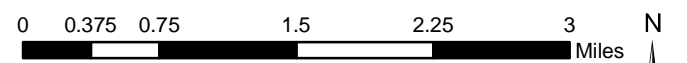
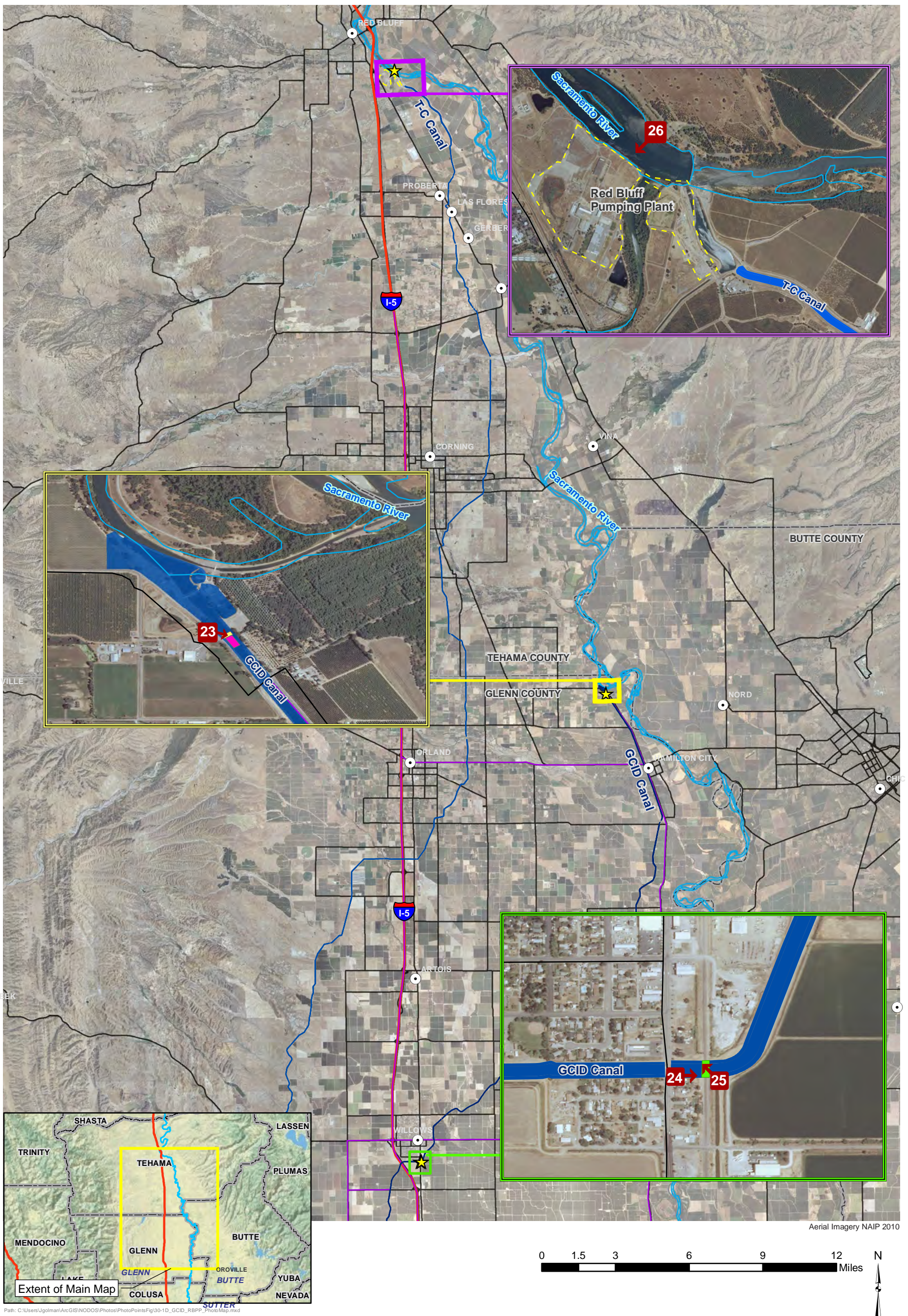


FIGURE 30-1A
Sites Reservoir Photo Locations
Sites Reservoir Project EIR/EIS



Legend

- 1 → Photo # & Location w/ Aspect
- ★ Project Facility Locations
- ⬜ (dashed yellow) Red Bluff Pumping Plant
- ⬜ (pink) GCID Canal Lining
- ⬜ (yellow) GCID Headgate Structure
- ⬜ (green) GCID Railroad Siphon
- ⬜ (purple) Existing Access Roads

FIGURE 30-1D
RBPP and GCID Facilities
Photo Locations
Sites Reservoir Project EIR/EIS



Photo 1: Looking south toward inundation area from atop a hill along the northern boundary of proposed Sites Reservoir. Saddle Dam Recreation Area would be located in the eastern foothills on the left of the photo.

FIGURE 30-2A
Northern Portion of Sites
Reservoir Inundation Area and
Saddle Dam Recreation Area
Landscape Character Photo
Sites Reservoir Project EIR/EIS

This page intentionally left blank.



Photo 2: Looking east from Maxwell Sites Road at the T-intersection with Sites Lodoga Road and Huffmaster Road in the Town of Sites. This location is within the proposed Sites Reservoir Inundation Area.



Photo 3: Looking northeast from Maxwell Sites Road at the T-intersection with Sites Lodoga Road and Huffmaster Road in the Town of Sites. This location is within the proposed Sites Reservoir Inundation Area.

FIGURE 30-2B
Sites Reservoir Inundation Area
Landscape Character Photos
Sites Reservoir Project EIR/EIS



Photo 4: Looking south from Maxwell Sites Road at the T-intersection with Sites Lodoga Road and Huffmaster Road in the Town of Sites. This location is within the proposed Sites Reservoir Inundation Area.



Photo 5: Looking west from near the Maxwell Sites Road at the T-intersection with Sites Lodoga Road and Huffmaster Road in the Town of Sites. This location is within the proposed Sites Reservoir Inundation Area.

FIGURE 30-2C
Sites Reservoir Inundation Area
Landscape Character Photos
Sites Reservoir Project EIR/EIS



Photo 6: Looking northwest toward the Golden Gate Dam location from outside of the inundation area.



Photo 7: Looking northwest toward the Golden Gate Dam left abutment location.

FIGURE 30-2D
Golden Gate Dam
Landscape Character Photos
Sites Reservoir Project EIR/EIS



Photo 8: Looking northwest toward the Golden Gate Dam right abutment location from outside of the inundation area.



Photo 9: Looking west along Maxwell Sites Road toward the Sites Dam left abutment location, from outside of the inundation area.

FIGURE 30-2E
Golden Gate Dam and Sites Dam
Landscape Character Photos
Sites Reservoir Project EIR/EIS



Photo 10: Looking west along Maxwell Sites Road toward the Sites Dam right abutment location, from outside of the inundation area.

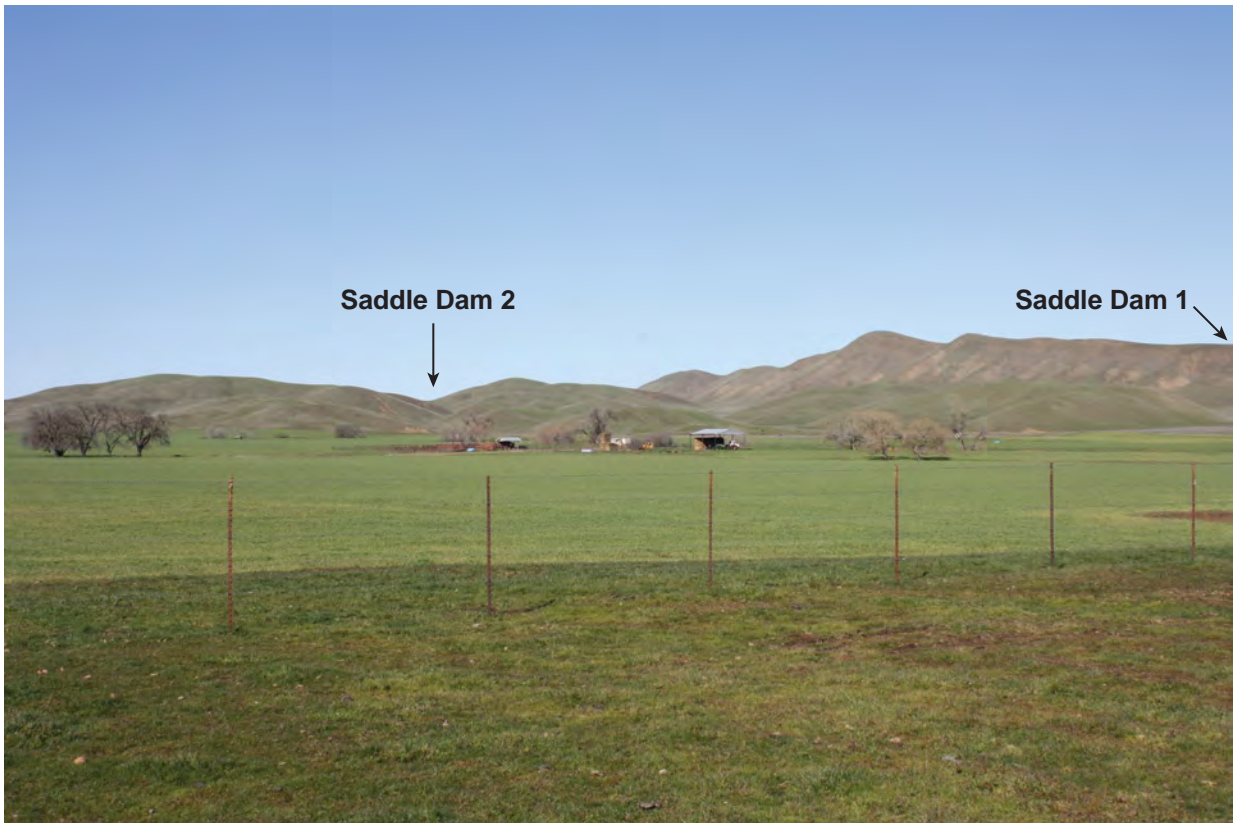


Photo 11: Looking north from Peterson Road toward Saddle Dams 1 and 2 locations from inside of the inundation area. Saddle Dam 1 would be located immediately adjacent to Logan Ridge on the right side of the photo. Saddle Dam 2 would be located to the left of center of the photo.

FIGURE 30-2F
Sites Dam and Saddle Dams 1 and 2
Landscape Character Photos
Sites Reservoir Project EIR/EIS



Photo 12: Looking north from Peterson Road toward the Saddle Dam 3 location from inside of the inundation area (in the distant hills near the center of the photo).

FIGURE 30-2G
Saddle Dam 3
Landscape Character Photo
Sites Reservoir Project EIR/EIS



Photo 13: Looking northeast from intersection of Maxwell Sites Road and Sites Lodoga Road toward the Stone Corral Recreation Area location, from within the inundation area.

FIGURE 30-2H
Stone Corral Recreation Area
Landscape Character Photo
Sites Reservoir Project EIR/EIS



Photo 14: Looking northwest from within the Sites Reservoir Inundation Area toward the Peninsula Hills Recreation Area location.

FIGURE 30-21
Peninsula Hills Recreation Area
Landscape Character Photo
Sites Reservoir Project EIR/EIS



Photo 15: Looking northeast from Sites Lodoga Road toward the Peninsula Hills Recreation Area location.



Photo 16: Looking west from Huffmaster Road toward the Antelope Island Recreation Area location.

FIGURE 30-2J
Peninsula Hills and Antelope Island
Recreation Areas
Landscape Character Photos
Sites Reservoir Project EIR/EIS



Photo 19: Looking east toward the Sites Pumping/Generating Plant location, from outside the inundation area.



Photo 20: Looking east from Peterson Road (within the Sites Reservoir Inundation Area) toward Sites Reservoir Inlet/Outlet structure location.

FIGURE 30-2L
Sites Reservoir Pumping/Generating
Plant and Inlet/Outlet Structure
Landscape Character Photos
Sites Reservoir Project EIR/EIS

This page intentionally left blank.



Photo 21: Looking west at the existing Funks Reservoir toward the Field Office Maintenance Yard location (to the right of center of photo) from the downstream side of Funks Reservoir near Funks Creek and the Funks Dam Spillway.

FIGURE 30-2M
Field Office Maintenance Yard
and Existing Funks Reservoir
Landscape Character Photo
Sites Reservoir Project EIR/EIS



Photo 23: Looking east and southeast toward the proposed GCID Canal Headgate Structure and Canal Lining location from the west side of the GCID Canal.

FIGURE 30-20
Proposed GCID Canal Headgate
Structure and Canal Lining Location
Landscape Character Photo
Sites Reservoir Project EIR/EIS

This page intentionally left blank.



Photo 24: Looking east toward the proposed GCID Canal Railroad Siphon Replacement location from the east side of Tehama Street/Highway 99W atop the GCID Canal berm.



Photo 25: Looking west at the proposed GCID Canal Railroad Siphon Replacement location from the east side of the railroad tracks atop the GCID Canal berm.

FIGURE 30-2P
GCID Canal Railroad Siphon
Replacement
Landscape Character Photos
Sites Reservoir Project EIR/EIS



Photo 26: Looking west from the east side of the Sacramento River at the Red Bluff Pumping Plant.



Photo 27: Looking northwest along the alignment of the TRR to Funks Creek Pipeline near the Outlet location at the Funks Creek crossing of McDermott Road.

FIGURE 30-2Q
Red Bluff Pumping Plant
and TRR Facilities
Landscape Character Photos
Sites Reservoir Project EIR/EIS



Photo 28: Looking southwest from McDermott Road and the residences near the northeast corner of the TRR toward the TRR location.



Photo 29: Looking northwest from McDermott Road and Lenahan Road toward the TRR location.

FIGURE 30-2R
Terminal Regulating Reservoir
Landscape Character Photos
Sites Reservoir Project EIR/EIS

This page intentionally left blank.

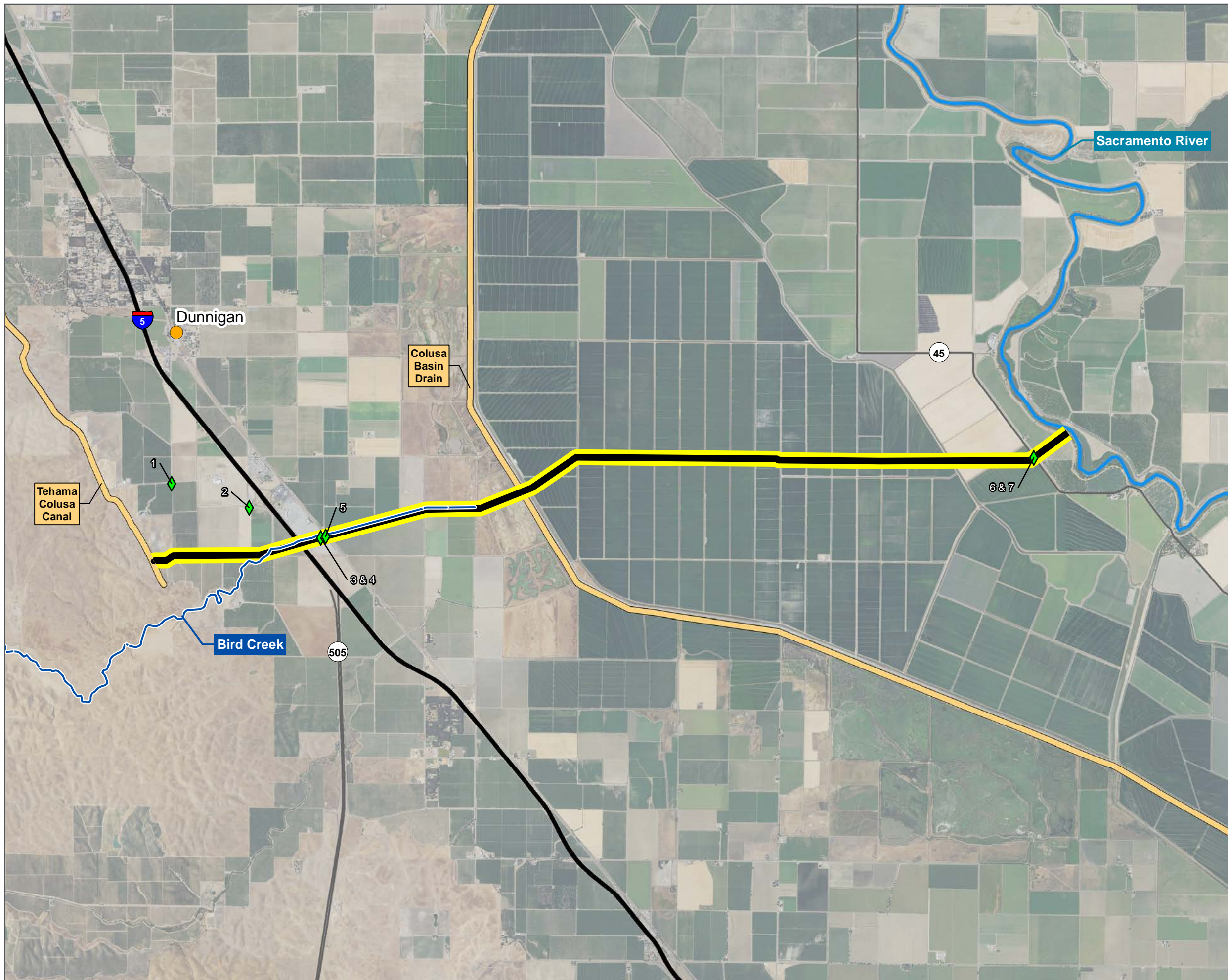


Photo 35: Looking south towards the proposed Boat Ramp Recreation Area, along Sites Lodoga Road.

FIGURE 30-2W
Boat Ramp
Landscape Character Photo
Sites Reservoir Project EIR/EIS

Section 24A.2

**2021 Dunnigan Pipeline
Alignment Photos and Map**



- LEGEND**
- City/Town/Community
 - ~ Bird Creek
 - ▬ Dunnigan Underground Pipeline
 - ◆ Photo Location

DATA SOURCES: City/Town - GNIS, 2020; Project Features - AECOM, 2020; Canals (NHD) - USGS, 2018; Aerial Imagery (NAIP) - USDA, 2020.

DISCLAIMER: This exhibit is preliminary and is subject to change.

MAP DATE: 4/27/2021

FIGURE 24A-1
SITES RESERVOIR, DUNNIGAN PIPELINE
ALIGNMENT PHOTO LOCATIONS

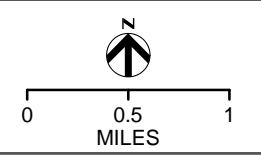




Photo 1: View of Dunnigan Pipeline alignment looking west from the intersection of Road 8 and Road 89A (Alternatives 1, 2, and 3)



Photo 2: View of Dunnigan Pipeline alignment looking south from Road 90B near its intersection with Road 8 (Alternatives 1, 2, and 3)

Graphics ... 00537.20 (4-15-2021) J.C



Figure 24A-2A
Sites Reservoir, Dunnigan Pipeline
Alignment Landscape Character Photos



Photo 3: View of Dunnigan Pipeline alignment looking west from Richie Bros. Auction Yard (Alternatives 1, 2, and 3)



Photo 4: View of Dunnigan Pipeline alignment looking east from Richie Bros. Auction Yard (Alternatives 1, 2, and 3)

Graphics ... 00537.20 (4-15-2021) J.C





Photo 5: View of Dunnigan Pipeline alignment looking east from Road 99W (Alternatives 1, 2, and 3)



Photo 6: View of Dunnigan Pipeline alignment looking west from State Route 45 (Alternative 2)



Photo 7: View of Dunnigan Pipeline alignment looking northeast from State Route 45 (Alternative 2)

Graphics ... 00537.20 (4-15-2021) J.C

